

# Fiery Command WorkStation 6 FS300 & Above Color Settings

## How to use this document

This tool is intended to show users the detailed color processing path for Fiery servers on FS300 software and above running Fiery Command WorkStation® 6. [Watch the full video](#) presentation to understand how each setting affects different color spaces. This page describes how to access the expert settings along with some key concepts related to digital front end (DFE) color management. Finally, you will see the recommended Fiery expert color settings to use for most jobs.

## Managing various color spaces

Users are able to send jobs to the Fiery server containing a variety of color spaces. The Fiery server processes each of the many color types for precise color output and consistency. Fiery servers offer advanced color management capabilities that provide users with greater color control. The expert features and options allow users to customize workflows to deliver accurate color every time.

This document provides examples of the impact of various color management settings to help guide you to configuring the Fiery server for the best color result. Although not every possible combination of options is presented, enough information is provided to ensure that you can make the correct decisions when setting up your workflows and output devices.

In a traditional print environment, CMYK workflows were often preferred. Fiery servers' color technology allow the flexibility to work in a variety of color spaces like CMYK, RGB, device independent color spaces, and custom spot colors without having to modify the native content to be compatible with a traditional print workflow.

## How do I know what color space I am using?

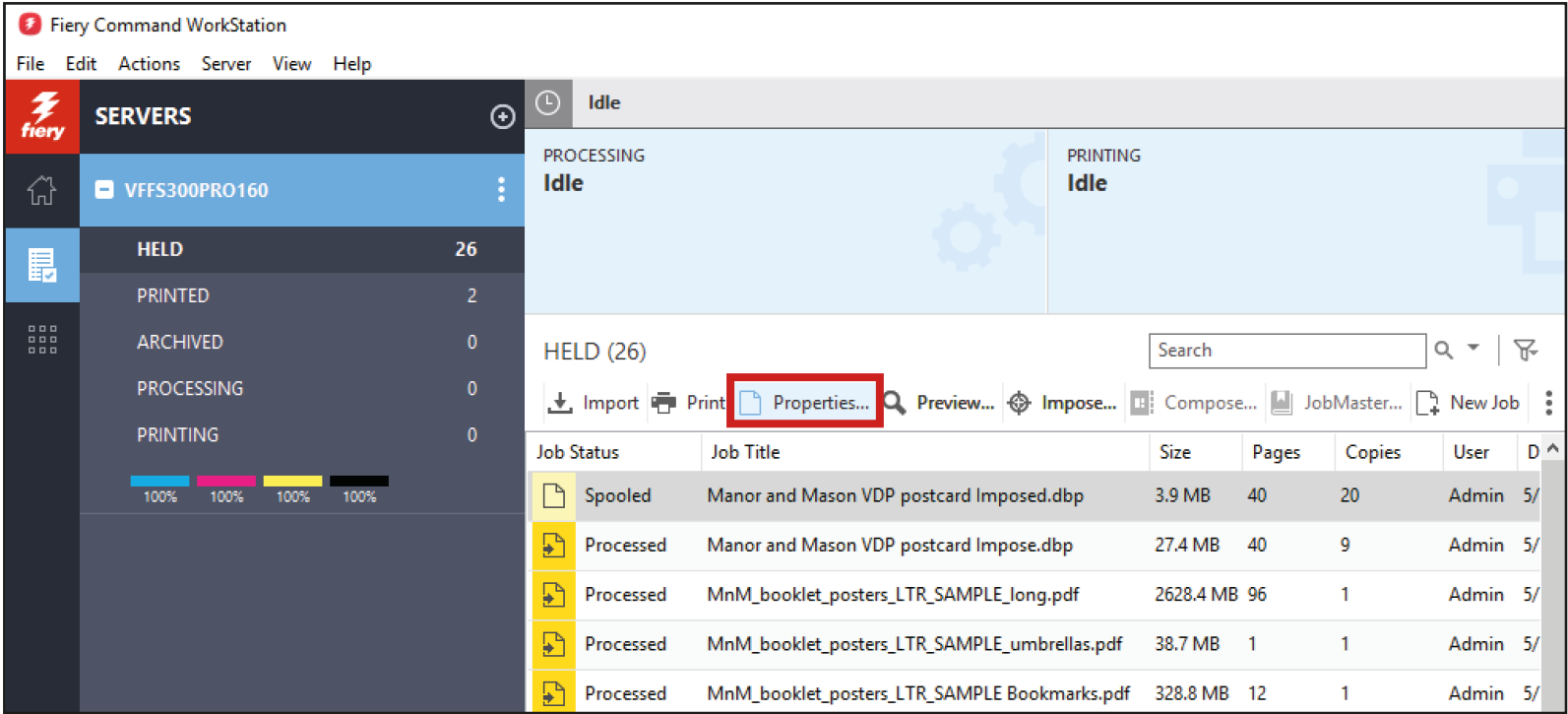
As content is designed in a native application, this provides the first source of information on the color type. Business applications typically use RGB while graphics applications can draw with CMYK, RGB and custom spot colors. Digital cameras capture images in RGB, and corporate logos are often created using spot colors from industry standard color libraries. If you do not have access to the native content, the Fiery server has utilities in the Graphic Arts Package, Premium Edition (or Productivity Package) that can help you identify documents' color content.

## Print Gray Using Black Only

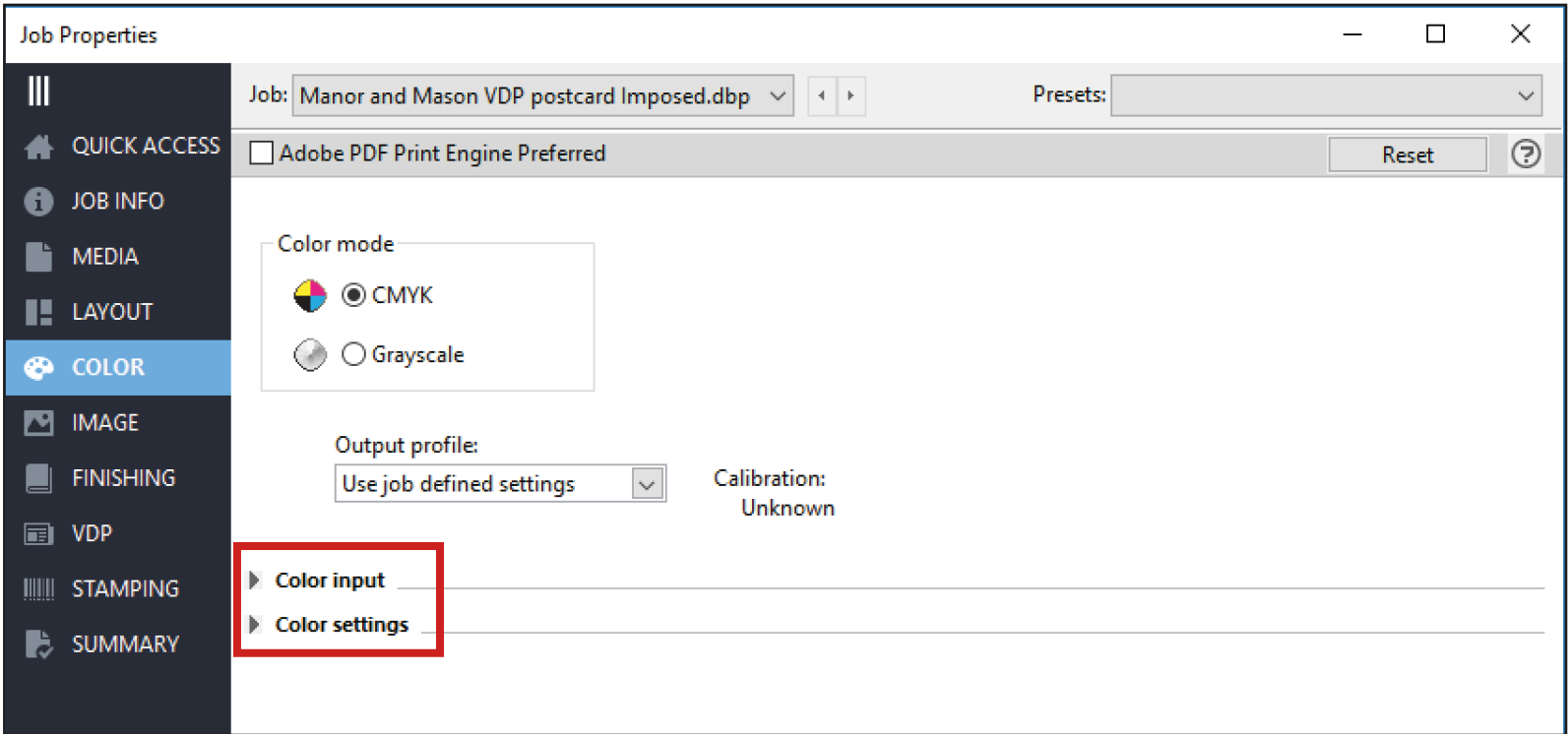
Color management is designed to convert color from a source device to a destination device and closely maintain the color appearance between these different devices. For example printing a RGB photograph from a digital camera to a printer using CMYK. A side effect of this design is converting pure colors like Black and Gray into the print system's CMYK. This can affect the neutral appearance of gray and add unwanted color clicks to the print job. Fiery servers' Gray and Black processing eliminate this problem by preserving the source Black and Gray colors to print with only the print system's black toner, saving the color click charge.

## How to access the color settings on your Fiery DFE

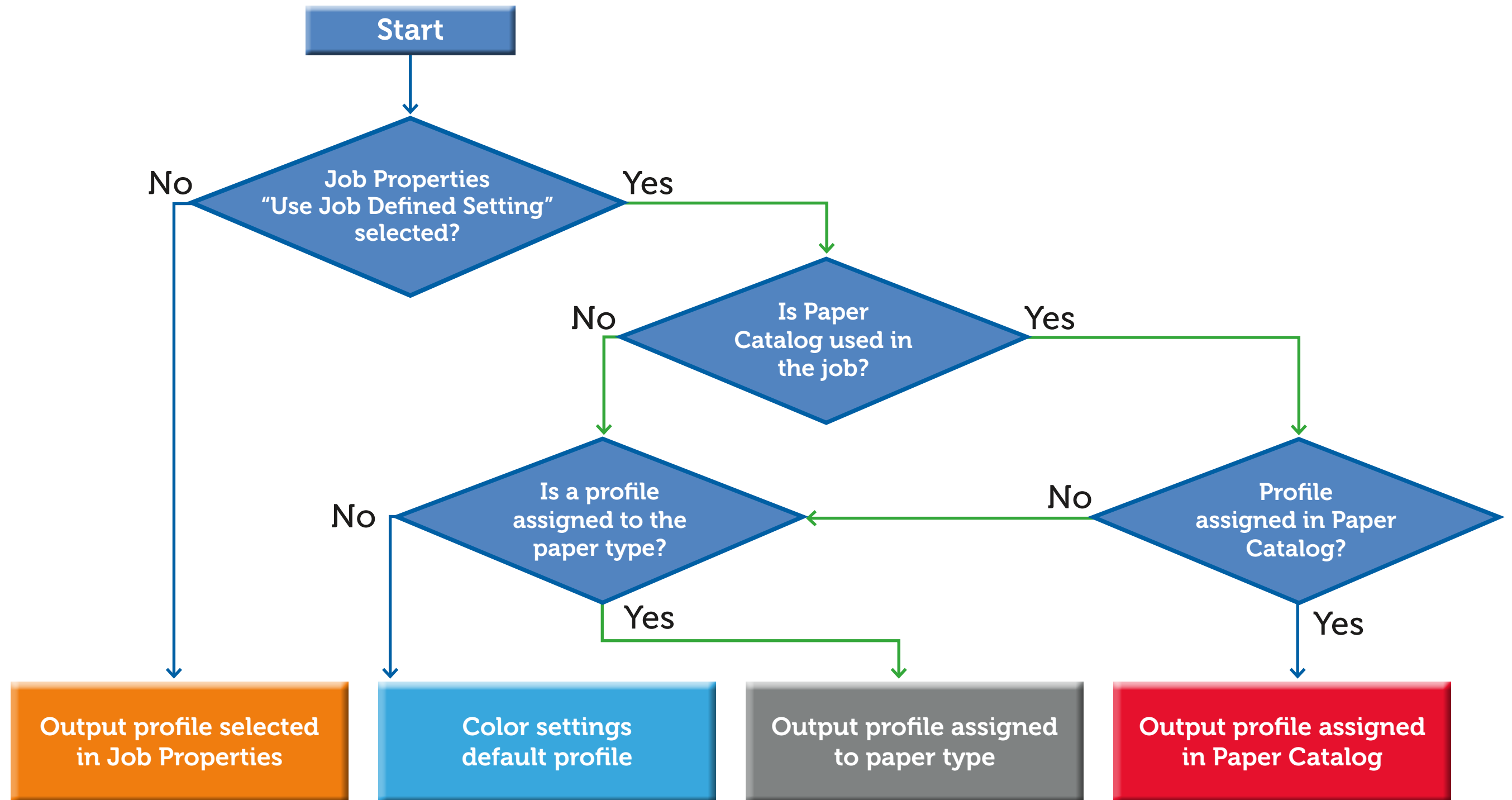
Select Properties after highlighting a job in the list from within Fiery Command WorkStation 6.



Expand the Color input and Color settings sections to view all color settings.



## Fiery server output profile selection



Fiery Command WorkStation 6 FS300 & Above Color Settings – Expert Color Management Best Practice Settings

Job: Job 1

Presets:

☐ Adobe PDF Print Engine Preferred

Color mode

CMYK

Grayscale

Output profile:  
Use job defined settings

Calibration:  
Plain, Default measurements

Color input

RGB/Lab

RGB source:  
sRGB (PC)

☒ Use RGB embedded profiles

RGB rendering intent:  
Photographic

Print RGB gray using black only:  
Text/Graphics

CMYK

CMYK source:  
PSO Coated FOGRA51 (EFI)

☐ Use CMYK embedded profiles

CMYK rendering intent:  
Relative Colorimetric

☒ Black point compensation

Print CMYK gray using black only:  
Text/Graphics/Images

Grayscale

Grayscale source:  
Dot Gain 10%

☒ Use Gray embedded profiles

Grayscale rendering intent:  
Relative Colorimetric

Print gray using black only:  
Text/Graphics/Images

Spot color

☒ Spot color matching

Use spot group:  
Default

Color settings

☐ PDF/X output intent

☐ Separate RGB/Lab to CMYK source

Black text and graphics:  
Pure Black On

☒ Composite overprint

☒ Substitute colors

☐ Auto trapping

ImageViewer Curves:  
No correction

☐ 2-color print mapping

☐ Combine separations

☒ Optimize RGB transparency

