

How to:

Optimize color quality of documents



How to: Optimize color quality of documents

Feature overview

Learn how to produce great color quality in documents by taking advantage of the standard state-of-the-art Fiery® color reproduction capabilities. These include spot colors, auto-trapping, image smoothing, spot color composite overprint, plus text and graphics enhancement.

Objectives

- Apply optimized color and image-quality settings in Job Properties

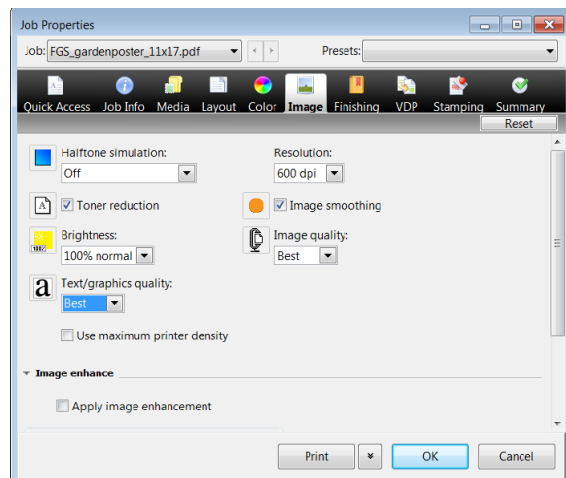
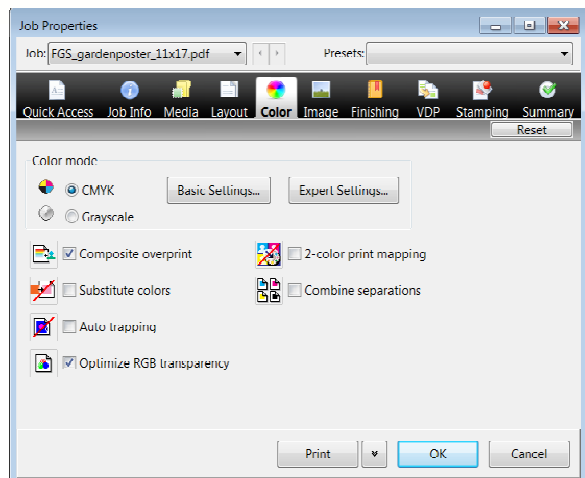
Additional resources

For additional software downloads, training resources and more, go to [Fiery Online Resources](#).

Before you begin

- Open Fiery Command WorkStation® 5.7 or later and connected to at least one Fiery server running Fiery FS200/FS200 Pro
- Place the sample file, **FGS_gardenposter_11x17.pdf** or **FGS_gardenposter_A3.pdf**, in the Fiery server Hold queue. Drag the file into the Command WorkStation Held list, or use the Command WorkStation Import menu option.
- Ensure the printer and Fiery server have been calibrated before printing any output.

How to: Optimize color quality of documents



Apply optimized color and image-quality settings in Job Properties

1. Select the **FGS_gardenposter_11x17.pdf** or **FGS_gardenposter_A3.pdf** file in the Command WorkStation held list. Then right-click to select **Print and Hold**.
2. Locate the **FGS_gardenposter_11x17.pdf** or **FGS_gardenposter_A3.pdf** file in the Held list. Then right-click select **Job Properties**.
3. Click the **Color** icon and set the following options:
 - a. Select the **Optimize RGB Transparency** check box.
 - b. Click **Expert Settings** to open the Advanced Edit dialog box.
 - c. In the Color Input tab CMYK/Grayscale area, select the **PDF/X output intent** check box.
 - d. In the RGB Lab area, select the **Use embedded profile when present** check box.
 - e. In the Spot color area, select the **Spot color matching** check box.
 - f. Select the Output tab, and confirm the correct output profile is selected for your job.
 - g. Click **OK** to close the Advanced Color settings.
4. Click the **Image** icon.
 - a. Select the **Image Smoothing** check box.
 - b. In Text/Graphics Quality, select **Best**.
5. Click **Print** to submit the job to the output device.
6. Collect the output and compare with the first print sample from step 1.

How to: Optimize color quality of documents

Note:

Page two for this sample file contains information to identify each area on page one. You can use it to reference the Job Property setting that optimized color for that section.



Default Settings

FGS Garden Poster Description

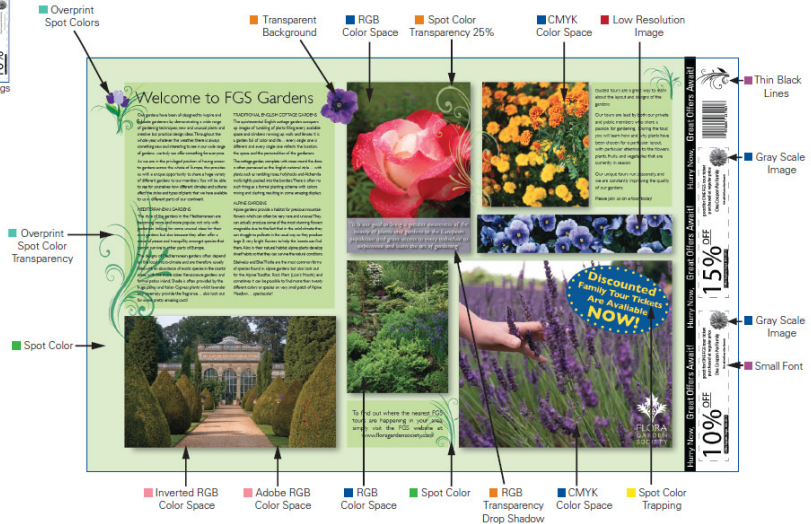
This poster demonstrates the key color management qualities a Fiery® server can handle. It produces the best matches for spot colors. It handles transparencies and overprints beautifully. And Fiery servers can manage multiple color spaces in a single document.

The sample file image to the right shows all the settings users can check to guarantee the best output.

1. Use when APPE is not selected.
2. Select either Auto Trapping or Best Quality for Text/Graphics, based on customer's preference.

To properly configure Fiery Driver settings and Job Properties, check the following...

- Composite Overprint
- Optimize RGB Transparency¹
- Auto Trapping
- Image Smoothing
- Text/Graphics Quality Best²
- Image Quality Best
- Use Embedded Profiles when Present
- Spot Color Matching



FGS Gardening Poster

The efi logo, Electronics For Imaging, Fiery, and the Fiery logo are registered trademarks, and efi is a trademark, of Electronics For Imaging, Inc. in the U.S. and/or certain other countries. All other terms and product names may be trademarks or registered trademarks of their respective owners, and are hereby acknowledged. The example companies, organizations, products, people and events depicted herein are fictitious. No association with any real company, organization, product, person, or event is intended or should be inferred. © 2012 Electronics For Imaging

EFI fuels success.

From Fiery to super wide inkjet, from the lowest cost per label to the most automated business processes, EFI has everything your company needs to succeed. Visit www.efi.com or call 650-357-3500 for more information.



The APPS logo, AutoCal, Auto-Count, Balance, Best, the Best logo, BESTColor, BioVu, BioWare, ColorPASS, Colorproof, ColorWise, Command WorkStation, CopyNet, Cretachrom, Cretaprint, the Cretaprint logo, Cretaprinter, Cretaroller, DockNet, Digital StoreFront, DocBuilder, DocBuilder Pro, DocStream, DSFdesign Studio, Dynamic Wedge, EDOX, EFI, the EFI logo, Electronics For Imaging, Entrac, EPCount, EPPhoto, EPRegister, EPStatus, Estimate, ExpressPay, Fabrivu, Fast-4, Fiery, the Fiery logo, Fiery Driven, the Fiery Driven logo, Fiery JobFlow, Fiery JobMaster, Fiery Link, Fiery Prints, the Fiery Prints logo, Fiery Spark, FreeForm, Hagen, Inkensity, Inkware, Jetrion, the Jetrion logo, LapNet, Logic, MiniNet, Monarch, MicroPress, OneFlow, Pace, PhotoXposure, Printcafe, PressVu, PrinterSite, PrintFlow, PrintMe, the PrintMe logo, PrintSmith, PrintSmith Site, Printstream, Print to Win, Prograph, PSI, PSI Flexo, Radius, Rastek, the Rastek logo, Remoteproof, RIPchips, RIP-While-Print, Screenproof, SendMe, Sincolor, Splash, Spot-On, TrackNet, UltraPress, Ultraflex, UltraVu, UV Series 50, VisualCal, VUTEK, the VUTEK logo, and WebTools are trademarks of Electronics For Imaging, Inc. and/or its wholly owned subsidiaries in the U.S. and/or certain other countries.