

FS200 How to: Booklet Impose



FS200 How to: Booklet Impose

Feature overview

Fiery® Impose is a layout application with a flexible, intuitive visual interface that simplifies document preparation and gives you the tools to achieve superb results with ease. Fiery Impose enables error-free layout at a sheet level.

Objectives

- Create a booklet imposition template using Fiery Impose.
- Apply saddle-stitch finishing.

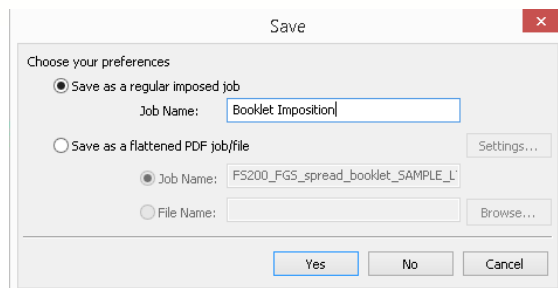
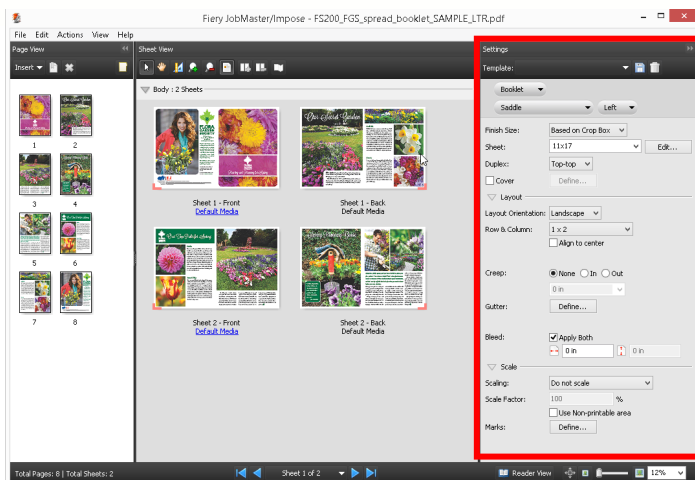
Additional resources

For additional software downloads, training resources and more, go to [Fiery Online Resources](#).

Before you begin

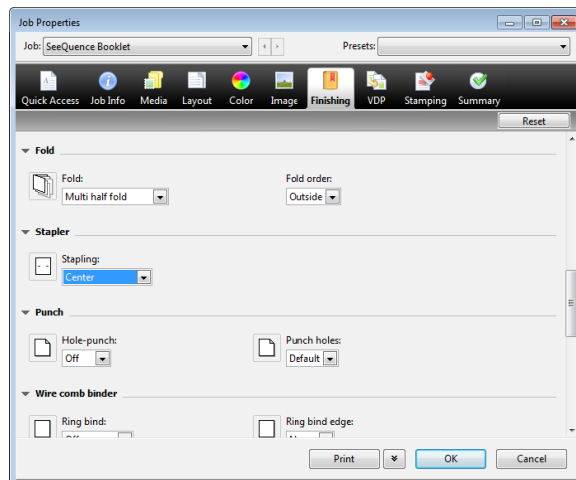
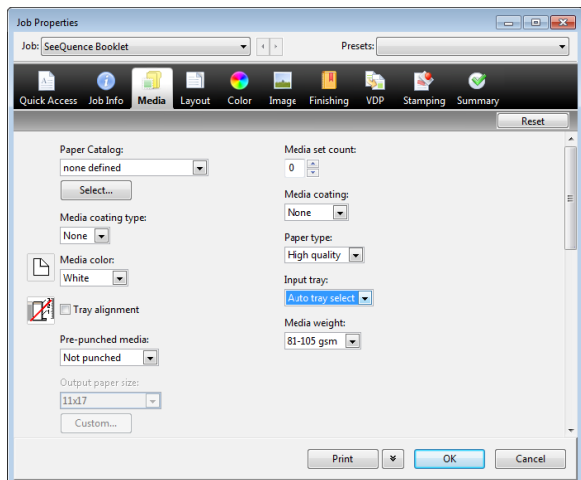
- Open Fiery Command WorkStation 5.7 ® or later and connect to at least one Fiery running Fiery FS200/FS200 Pro.
- Activate the Fiery Impose license on the computer running Command WorkStation.
- Place the sample file, **FS200_FGS_spread_booklet_SAMPLE_LTR.pdf** or **FS200_FGS_spread_booklet_SAMPLE_A4.pdf**, in the Fiery server Hold queue. Drag the file to the Command WorkStation Held list or use the Command WorkStation Import menu option.
- Ensure the printer and Fiery server have been calibrated before printing any output.

Each printer will have different procedures for configuring and printing the finished document. Consult the user documentation for your printer and Fiery server to be used for tasks in this how-to guide.



Create a booklet imposition template using Fiery Impose

1. Select the **FS200_FGS_spread_booklet_SAMPLE_LTR.pdf** or **FS200_FGS_spread_booklet_SAMPLE_A4.pdf**, file in the Command WorkStation Held list. Then right-click to select **Impose**. Or click the **Impose** icon in the toolbar if it has already been added.
2. In the Impose window, select **Booklet** for the product intent in the Settings pane.
3. Below Booklet, select **Saddle** and **Left**.
4. For Sheet, select **11x17** or **A3**.
5. In the Layout area, set the following options:
 - a. Layout Orientation: **Landscape**.
 - b. Row & Column: **1 x 2**.
6. In the Scale area, set the following options:
 - a. Scaling: **Do not scale**.
 - b. Marks: Click **Define** and clear the **Print trim marks** check box. Click **OK** to close the Marks window.
7. Click the **Save** icon next to Template to save this new template for future use.
8. When the Save Template window opens, enter a name for this template. For this example, type **Booklet_Imposition** and then click **OK**.
9. The Template menu will display **Booklet_Imposition**.
10. Save and name the job.
11. Click **File > Save**.
12. Click **Save as a regular imposed job** and change the job name to **Booklet**. Then click **OK** when done.
13. Click **File > Exit** or click the red **X** located in the corner to close Fiery Impose.
14. The new job will be saved in the Held list.
15. In the next section, you will apply finishing options.



Apply saddle-stitch finishing

1. Select your new job, **Booklet**, in the Held list, and right-click to select **Properties**.
2. In the Job Properties window, click the **Media** icon and specify the media print options appropriate for your workflow.
3. Click the **Finishing** icon and specify the appropriate Fold, Stapler, Page Order and Output Tray for your printer. The finishing options will vary with printer.
4. Click **Print** to submit the job to the Fiery server.

The previously saved imposition template can be applied to Virtual Printers, Hot Folders or Job Properties, improving the future workflow of similar jobs.



EFI fuels success.

From Fiery to super wide inkjet, from the lowest cost per label to the most automated business processes, EFI has everything your company needs to succeed. Visit www.efi.com or call 650-357-3500 for more information.



The APPS logo, AutoCal, Auto-Count, Balance, Best, the Best logo, BESTColor, BioVu, BioWare, ColorPASS, Colorproof, ColorWise, Command WorkStation, CopyNet, Cretachrom, Cretaprint, the Cretaprint logo, Cretaprinter, Cretaroller, DockNet, Digital StoreFront, DocBuilder, DocBuilder Pro, DocStream, DSFdesign Studio, Dynamic Wedge, EDOX, EFI, the EFI logo, Electronics For Imaging, Entrac, EPCount, EPPhoto, EPRegister, EPStatus, Estimate, ExpressPay, Fabrivid, Fast-4, Fiery, the Fiery logo, Fiery Driven, the Fiery Driven logo, Fiery JobFlow, Fiery JobMaster, Fiery Link, Fiery Prints, the Fiery Prints logo, Fiery Spark, FreeForm, Hagen, Inkintensity, Inkware, Jetrion, the Jetrion logo, LapNet, Logic, MiniNet, Monarch, MicroPress, OneFlow, Pace, PhotoXposure, Printcafe, PressVu, PrinterSite, PrintFlow, PrintMe, the PrintMe logo, PrintSmith, PrintSmith Site, Printstream, Print to Win, Prograph, PSI, PSI Flexo, Radius, Rastek, the Rastek logo, Remoteproof, RIPchips, RIP-While-Print, Screenproof, SendMe, Sincolor, Splash, Spot-On, TrackNet, UltraPress, Ultraflex, UltraVu, UV Series 50, VisualCal, VUTEK, the VUTEK logo, and WebTools are trademarks of Electronics For Imaging, Inc. and/or its wholly owned subsidiaries in the U.S. and/or certain other countries.